

About AVN80X > Performance

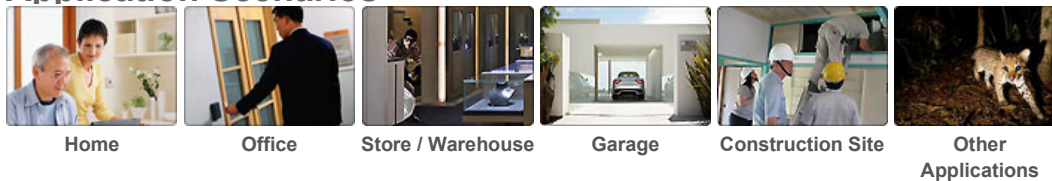


Do you have **iPhone**, **iPad** or **Android** Mobile Device?

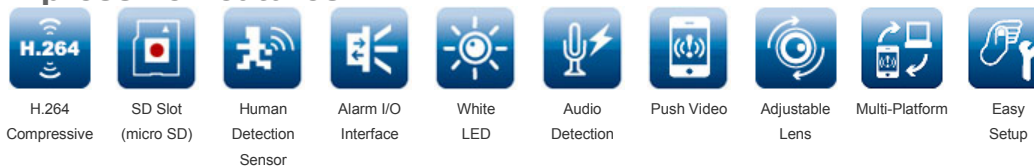
AVN80X will be your never sleep housekeeper.

It will immediately deliver the event video to you (**Push Video**) to let you know what just happened.

Application Scenarios



Impressive Features



6 Must-Buy Reasons



1. PUSH VIDEO, Get event video call in 5 sec. for human detection or alarm event

When a self-defined event occurs, such as human or alarm, AVN80X will immediately make a video call to your iPad, iPhone or Android phone which will then activate our mobile surveillance software, EagleEyes, automatically for remote access.

2. Powerful Remote Surveillance on Multiple Mobile Platforms



Mobile surveillance via many popular mobile platforms, such as iPhone®, iPad®, Android™ and Nokia®, is supported to fulfill various users' demands. Our self-developed mobile solution, "EagleEyes", can be installed for surveillance, anywhere & anytime on your mobile phone. Please visit: [EagleEyes](#) website for more details.

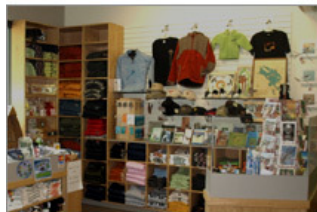


3. External I/O Devices Support:

You can connect all alarm I/O devices (such as magnetic contacts, infrared twin beam sensors, and smoke detectors) to AVN80X for 5-Sec Event Video Call and get real-time mobile surveillance. For those technological product fans, it is assured that AVN80X can be in operation via external control devices.

4. Digital PTZ:

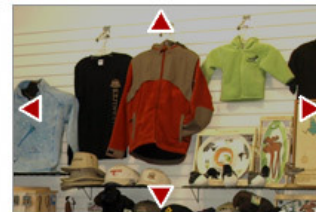
To see more details, Digital PTZ allows users to move up / down and left / to after zoom in on an object.



1.3 Megapixel view



Digital Zoom





Digital pan / tilt



5. LED Status Indicators:

A LED status indicator is designed to show the current Internet and LAN connection, which enables users to check network connection status with ease.

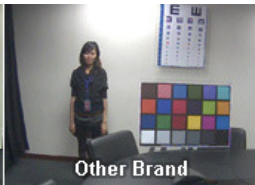
-  LAN connection status
-  Internet connection status

6. Image Comparison 

Daytime Image



AVTECH



Other Brand

Night time with White LED



AVTECH



Other Brand

During day time surveillance, compared with other brand cameras, AVTECH's IP camera is embedded with a Live MOS image sensor and Uniphier DSP from famous Japanese component supplier. Therefore, the image quality is relatively better. During night time surveillance, AVTECH's IP camera is equipped with high power white LED and big aperture (F1.5) lens to illuminate the scene to provide you with colorful and clear images. The nighttime performance has shown advantage compared with other competitors.